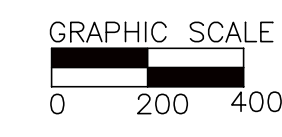
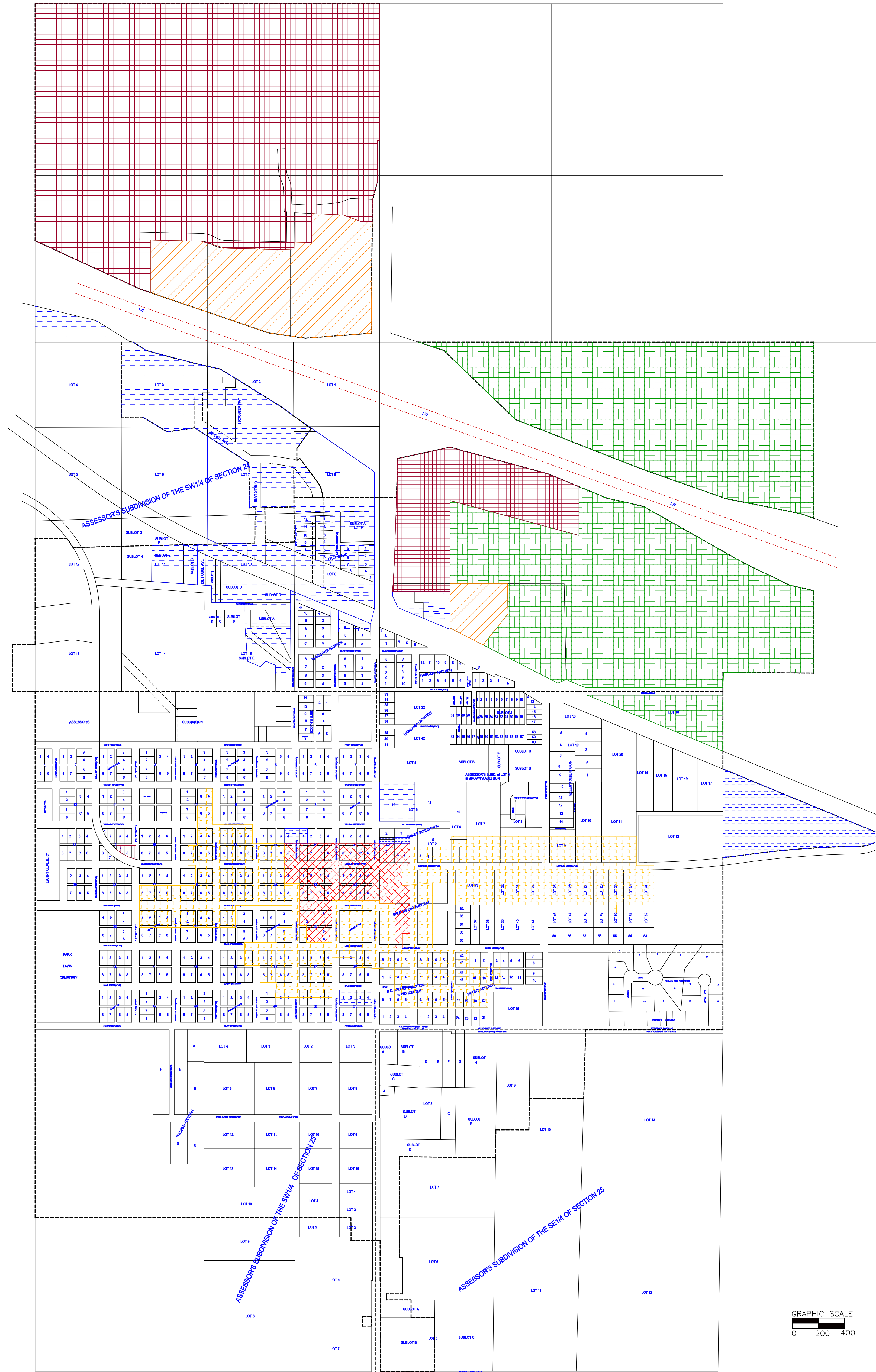
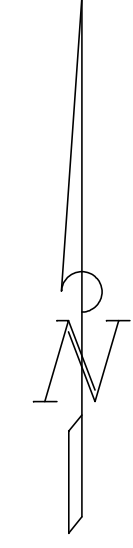
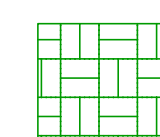
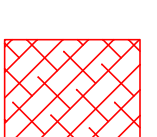
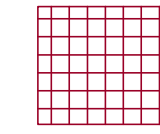
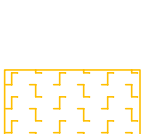

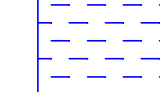


**BARRY, ILLINOIS
ZONING MAP**



- | | |
|---|---|
|  = AGRICULTURAL DISTRICT (A) |  = HISTORIC BUSINESS DISTRICT (HBD1) |
|  = HIGHWAY BUSINESS DISTRICT (B-2) |  = HISTORIC DISTRICT (HDR1) (SINGLE FAMILY) |
|  = INDUSTRIAL DISTRICT (I-1) | UNCOLORED: SINGLE RESIDENTIAL (R-1) MULTI RESIDENTIAL (R-2) |
|  = GENERAL BUSINESS DISTRICT (B-1) | |

MAY 1, 2012

MAP PREPARED BY

HART AND WYATT
PROFESSIONAL LAND SURVEYORS
LICENSED IN ILLINOIS AND MISSOURI
709 MORTIMER ST., BARRY, ILLINOIS 62512
PHONE 217-243-7721 217-243-8897