

Barry, IL

Community Profile

**TOTAL
POPULATION
1,320**

The total population of the City of Barry is 1,320. The median age is 42.64.

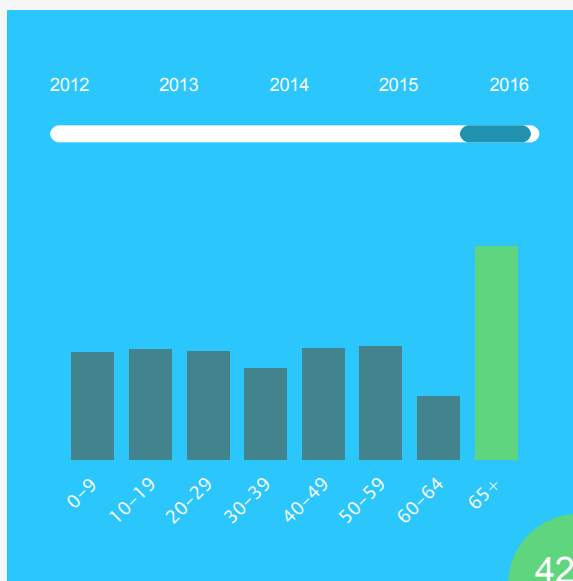


The population in Barry has grown 0.15% since 2012.

1% —————

0% ———— 

Age Distribution



45.61%
Male



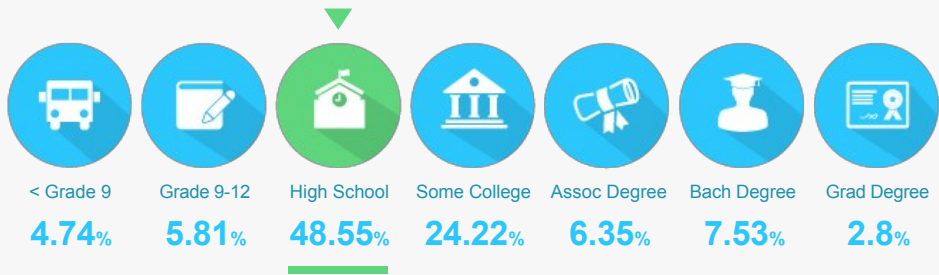
54.39%
Female



42.64
Median Age

EDUCATIONAL ATTAINMENT

The majority of the population in Barry has completed at least a high school degree.



16.68%
of the population
has a college degree.



offer Associate's Degree
or Certificate

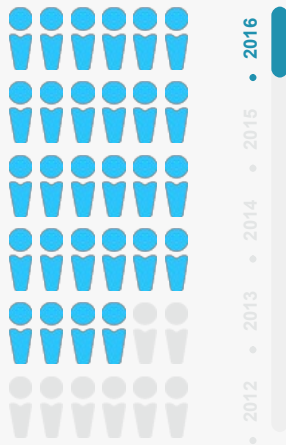


offer Bachelor's Degree
or Higher

LABOR FORCE 620

Barry has a labor force of 620 people, with a job growth rate of -3.32% since 2015.

TOTAL EMPLOYEES



612
2016

The work distribution of total employees in Barry is.



5 TOP TALENT

Where are the top jobs by occupation?

Education/Training/Library



17.32%
106

Sales



7.52%
46

Production Workers



6.54%
40

Office and Administrative support



12.91%
79

Executive, Managers, and Administrators



6.86%
42

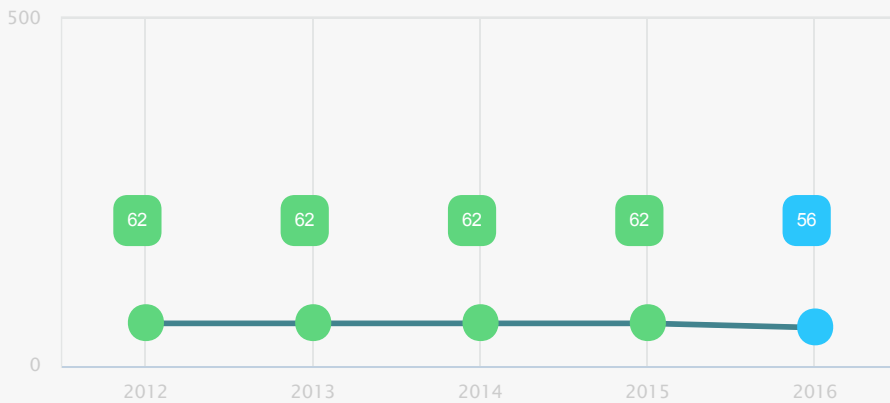
TOTAL ESTABLISHMENTS
58

BUSINESSES AND JOBS

Barry has a total of 58 businesses. In 2016, the leading industries were:

Manufacturing, Retail, Education, Health Care and Social Services, and Accommodation and Food Services

Which are the top 5 industries by jobs?



How many employees do businesses in Barry have?

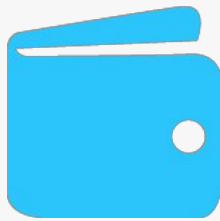


1-4 Employees	58.62%
5-9 Employees	18.97%
10-19 Employees	10.34%
20-49 Employees	6.9%
50-99 Employees	3.45%
100+ Employees	1.72%

INCOME AND SPENDING

Workers in Barry earn a median yearly household income of \$36,811. 22.7% of the households earn more than the national average each year. Household expenditures average \$42,042 per year. The majority of earnings get spent on Shelter, Transportation, Food and Beverages, Health Care, and Utilities.

There are 158% more households who own their homes than there are renters.

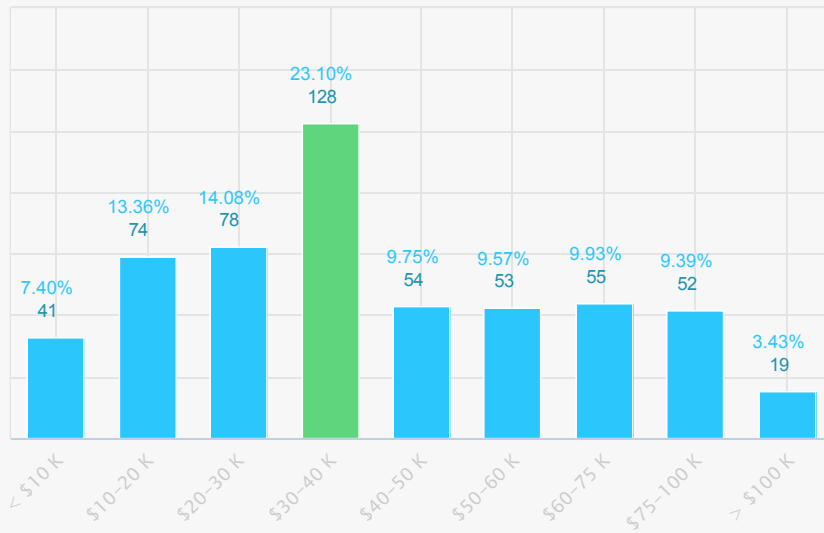


MEDIAN

**HOUSEHOLD
INCOME**
\$36,811

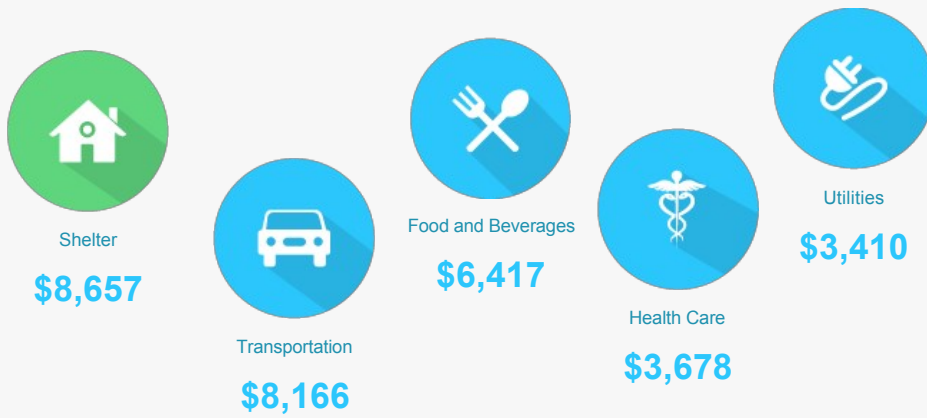
8% less than the county
39% less than the state
34% less than the nation

Income Distribution



How do people spend much of their money?

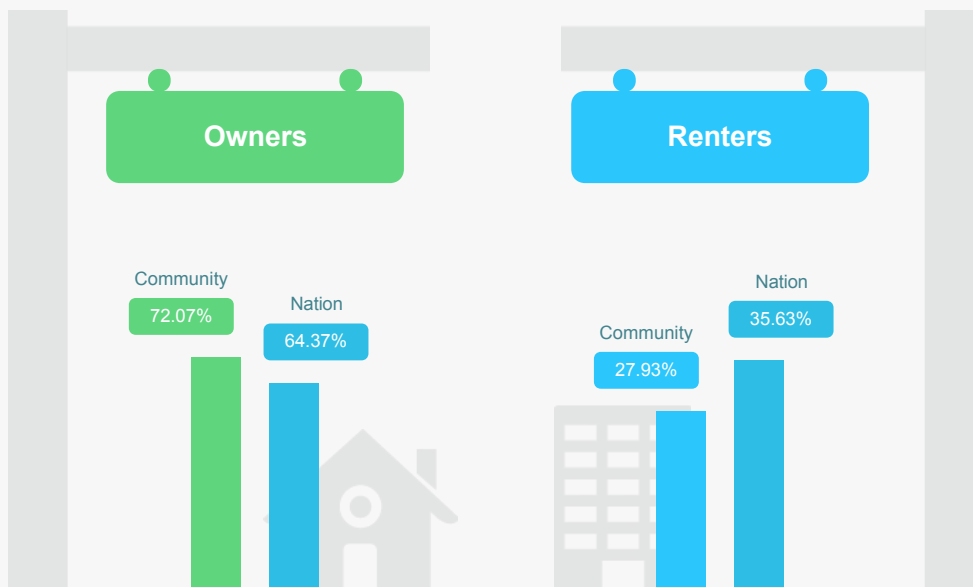
\$ PER HOUSEHOLD



The average household expenditure in Barry is:

\$42,042

HOUSING



TRANSPORTATION

Residents spend an average of 27 minutes commuting to work. Barry is served by 8 airports within 50 miles. Rail can be accessed within 1 miles. Interstates can be accessed within the community.

Interstate

In Community



27 min.

Commute Travel Time



0

Airports in Community

8

Airports in Community (+50 miles)



1 miles

Distance to Freight Rail

Map Terrain Hybrid

Barry, Illinois

Population: 1,320
Labor Force Size: 620
Bachelors Degree or Higher: 10.3%
Household Median Income: 36,811
Commute Travel Time: 27

- Save to folder
- Full Report
- Labor Force Report
- Demographics Report
- Consumer Spending Report
- Wages Report
- Talent Pool Report
- Housing Report

Google

Map data ©2016 Google Terms of Use Report a map error